

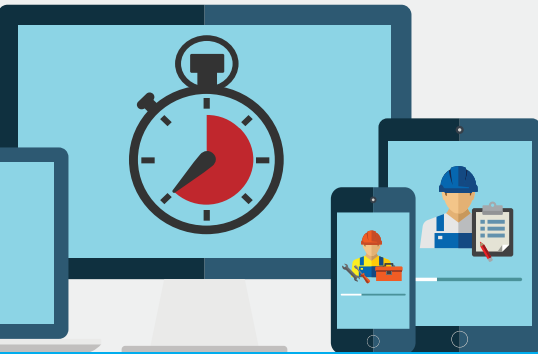
maestro*

overtime calculation

User-defined calculation automation.

Create overtime rules based on their specific usage needs and regulatory requirements. The user-defined overtime rules can be applied by project and/or sub-project, in addition to by-employee, which allows complex calculations to take place.

The overtime calculator completes the initial hour analysis and provides a user interface to manage the editing of hours before changes are applied to the various hour entry processes in maestro*.



Overtime calculation features

Overtime calculation rule definition

- Allows the creation of unlimited user defined overtime calculation rules, either weekly or by pay period, that can be used as the basis to calculate overtime, and double-time rates for a variety of employee scenarios.

maestro* project integration

- Allows the application of overtime calculation rules by project / sub-project, based on the project specific needs.

maestro* time management integration

- Allows an interface for the functional application of the various overtime calculation rules within maestro* to modify time entry from regular hours to the desired overtime and double-time hours by employee group, sector, date or by payroll committee.
- Allows the review of proposed changes prior to posting to ensure accuracy.
- Automatic posting of changes throughout the various time capture modules in maestro* Service Call, Work Order and Project Time.